

Studio One Macro Toolbar

The Studio One Macro Toolbar is an extension that allows powerful customization of your workflow within Studio One. Groups and Buttons can be freely added to the Macro Toolbar for existing commands, making it possible to bring what is important to your personal workflow to the surface.

Beyond this, Macros can be created, which string together multiple commands to form a single action. For instance, you might want a way to quickly select multiple events across multiple tracks within the loop range and merge them to form single continuous events. This would normally involve a number of separate actions, either with the mouse or keyboard, but creating a macro for this reduces the process to a single action.

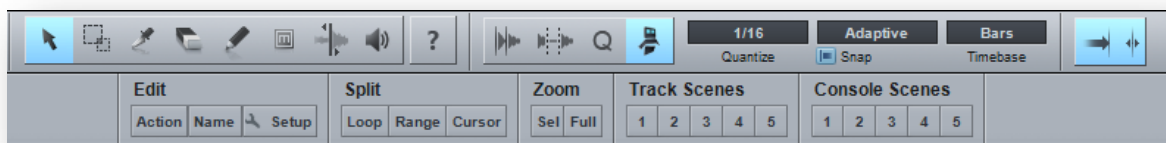
Further, it is possible to map buttons on your MIDI hardware to trigger these Macros, just as you can with the regular commands. This allows for endless possibilities in customizing your own workflow, even when using control surfaces that are not natively supported. Enjoy!

Installation

The Studio One Macro Toolbar Extension must first be downloaded from the Exchange, and then installed. If your Studio One computer is online, navigate to the Exchange in the Browser on the Song page, find the Studio One Macro Toolbar listing and click on Install. If your Studio One computer is not online, visit <http://studioone.presonus.com/exchange/> and download the extension, then bring it to your Studio One computer and drag the extension onto the Start page of Studio One to install.

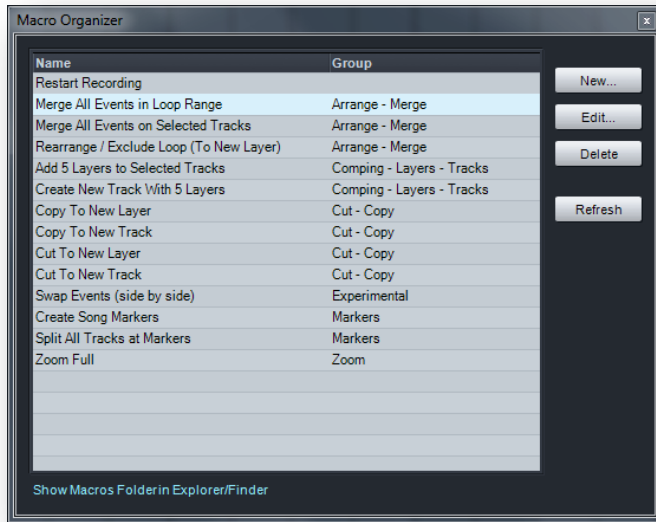
Overview

Once the Macro Toolbar Extension is installed, start Studio One and open a Song. You will notice the Macro Toolbar button next to the Audio Bend, Strip Silence, and Quantize panel buttons in the top toolbar. Click on this button to expand the Macro Toolbar panel which is docked to the top panel by default, however can be detached like the other panels by clicking on the detach button to the far right of the panel. When detached, [Right]/[Control]+click in the panel to adjust for vertical or horizontal orientation.

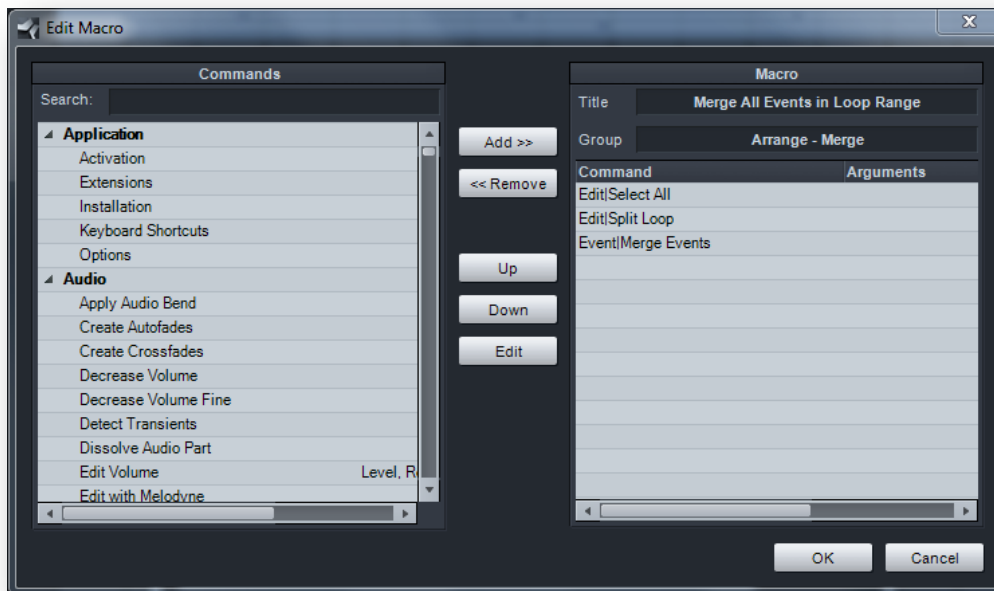


Several items are in the Toolbar by default for demonstration purposes. Note that any button can be removed, as well as any entire group of buttons. This toolbar is completely customizable. To see how

Macros are put together, open the Macro Organizer by clicking on the Setup/Macro Organizer in the Edit Group of the Macro Toolbar, or navigate to the Studio One/Macro Organizer menu.



Click on Merge All Events in Loop Range in the list, and then click on Edit.



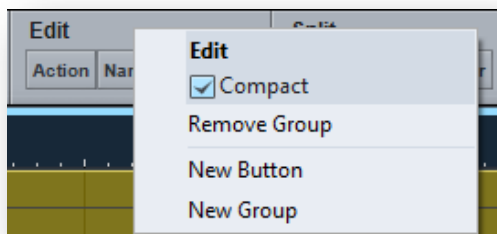
This is the Edit Macro menu where you will create and modify your Macros. On the left is the Keyboard Shortcuts menu, which lists all available commands in Studio One. On the right is the Macro Title, Group, and list of commands that the Macro will perform when triggered. Commands are executed in the order in which they are listed here. So, this Macro will select all events, split them at the left and right locator locations, then merge the events that are still selected (those within the loop range in this case).

Cancel out of the Edit Macro and Macro Organizer menus and look again at the Macro Toolbar. Click on the Action button in the Edit group, and you will see a list of all of your Macros, categorized by the Groups you entered in the Group field for each Macro in the Edit Macro menu. Clicking on any item in this list will perform the Macro.

Click on the Name button in the Edit group to rename any selected events. The list of predefined names can be customized by clicking on Setup/Edit Names in the Edit group to open the file 'EventNames.txt', which uses a simple syntax to build the menu hierarchy.

Customize the Toolbar

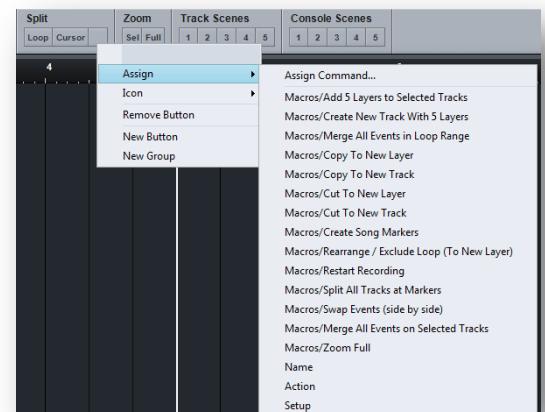
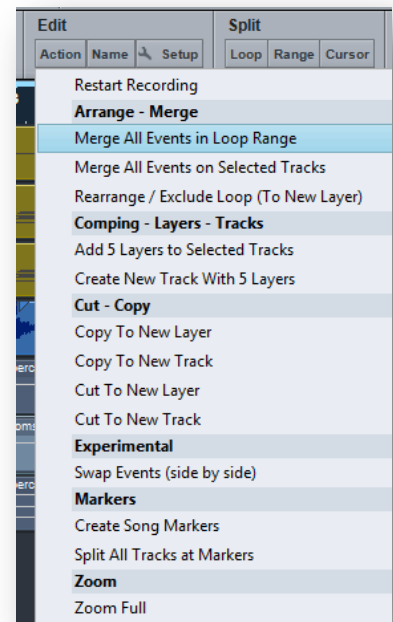
It is possible to add new Groups and Buttons to the Toolbar, as well as remove or modify any existing. [Right]/[Option] + click on the Edit group in the Toolbar, and you will see a context menu.



Double-click on the name to rename the Group. The Compact toggle will make the interface use a little horizontal space as possible when engaged. Click on Remove Group to completely remove the Group and all Buttons it contains. Click on New Group or New Button to create a new Group or Button. Groups are named *Group* by default, and are renamed in the [Right]/[Option]+click context menu by double-clicking on the name.

Buttons are blank by default. [Right]/Option]+click on a Button and choose one of your Macros from the top level list, or Assign/Assign Command to select a Key Command to associate with the button. You can associate any Macro or command to a button.

Buttons can also make use of custom icons. [Right]/Option]+click on a Button and click on Icon/Select Image and choose any 22x22 pixel PNG image file to use a custom icon.



Make a New Macro

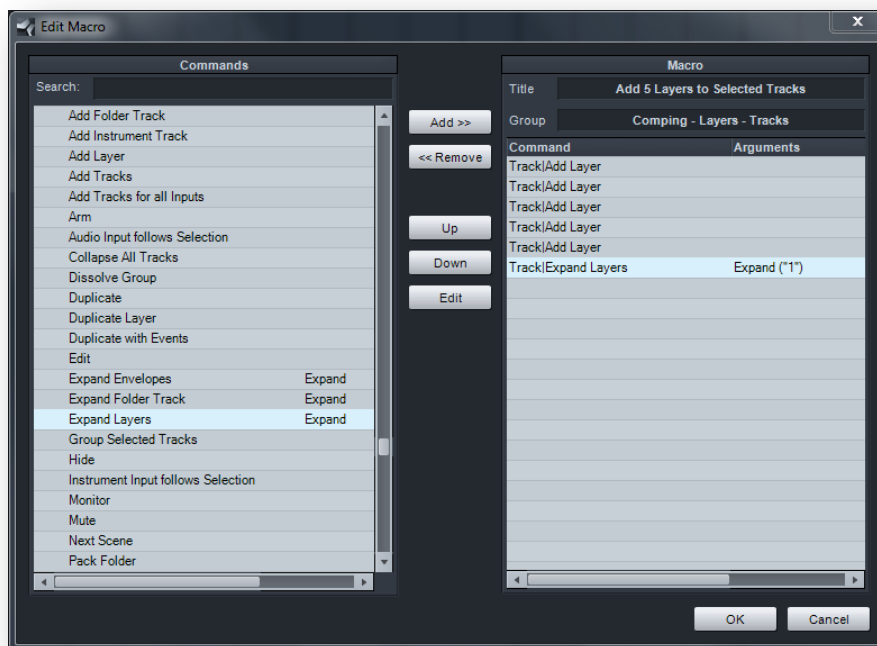
To make your own Macro, open the Macro Organizer menu by clicking on Setup/Macro Organizer in the Edit Group of the Macro Toolbar or navigating to Studio One/Macro Organizer. Click on New to open the Edit Macro menu. Give your Macro a Title, which is how it will appear in any menu, as well as a Group Name, which will determine how it is organized in the previously mentioned Action list of the Macro Toolbar.

Next, navigate the list on the left to find the first command for your Macro, select it, and then click on Add to add the command to the list on the right. Repeat this until each command you need is in the list. Note that the commands will be performed in the order they are listed, so be sure the order is setup to achieve the desired result. Select any item in the list and click on Up or Down to move the item in the list.

Arguments

Note that some commands have Arguments associated with them, such as Track|Expand Layers. Commands with Arguments will list an Argument descriptor next to the command in the command list. Arguments provide a specific behavior for commands where multiple behaviors are possible.

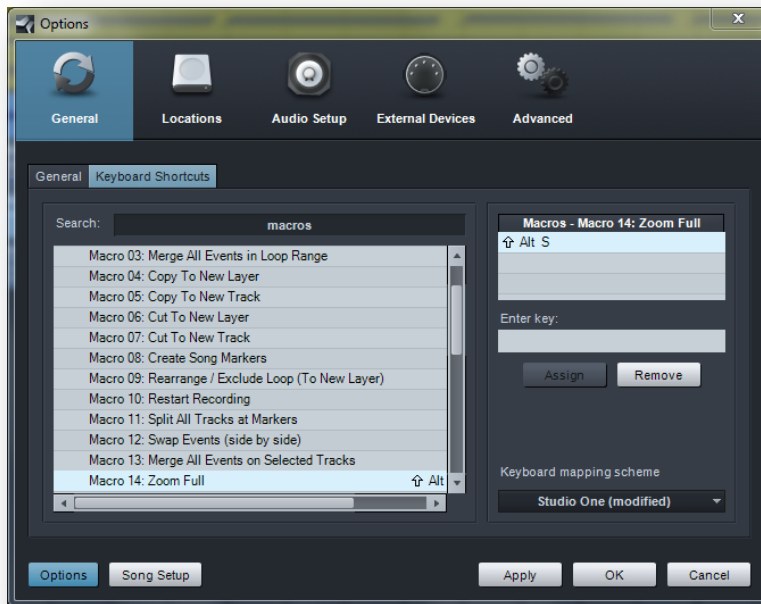
With the Track|Expand Layers command, the Argument 'Open' should be set to 0 or 1. Setting the Argument to 0 will result in the Expand Layers option to be disengaged, whereas a 1 engages the option.



Commands can have multiple arguments, for instance Edit Volume has 'Level' and 'Relative' as separate arguments, where 'Level' is a dB value and 'Relative' can be "0" or "1" to either set the event volume to the absolute dB value or to add/subtract it from the current level.

Make a Key Command for your Macro

Key commands can be associated with your Macros just like any command in Studio One. Open the Studio One/Keyboard Shortcuts menu (OSX: File/Keyboard Shortcuts), and type *macros* in the search field to quickly show the Macros section. Select any Macro from the list and assign a key command by typing into the Enter Key field and clicking on Assign.



Map Macros to your MIDI Hardware

As with any command in Studio One, Macros can be mapped to your MIDI hardware. To do this, open the device map for the hardware you want to map macros by double-clicking on the device in the External panel of the Console. While any control you have learned for the device can be mapped, buttons are the most logical choice. [Right]/[Option]+click on any button in the map and choose Assign Command.

Type *macros* in the search field to quickly find your Macros, select the one you want, and click on OK.

Note that even control surfaces that are not natively supported can have commands assigned, so long as the desired controls transmit MIDI CC values.

Macro Storage

Your individual Macro commands are stored in a single location, reached via the Show Macros Folder in Explorer/Finder link at the bottom of the Macro Organizer menu. Each Macro is a unique file in XML format, and it is possible to edit the XML directly if desired. These files are also portable, so you can share them with other users via the [PreSonus Exchange](#).